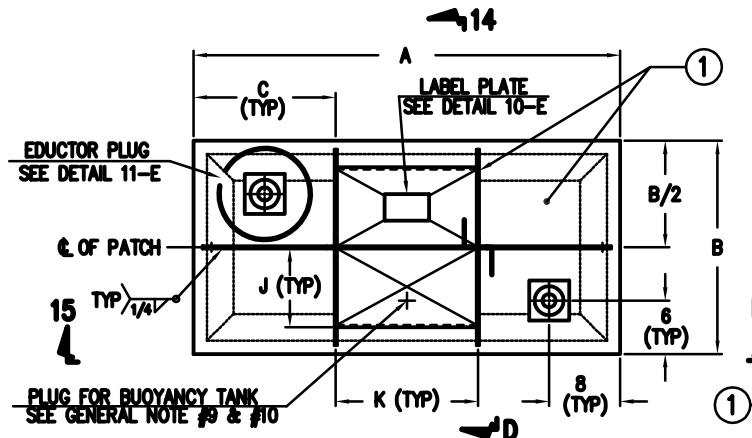
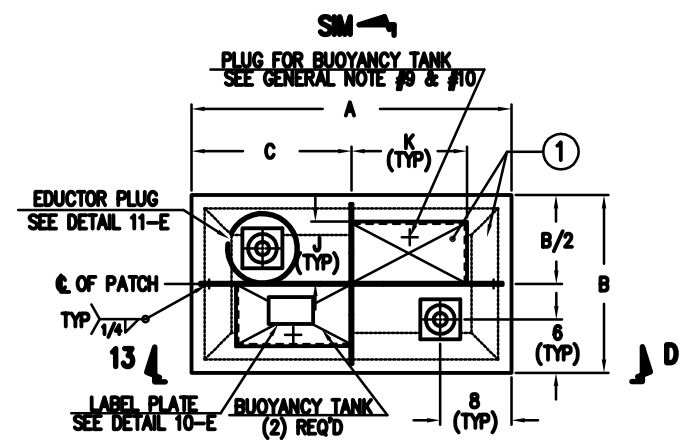


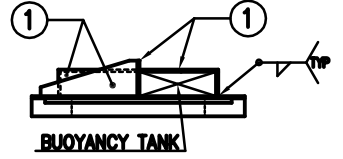
NOTE : SEE TABLE 14-A FOR DIMENSIONS.



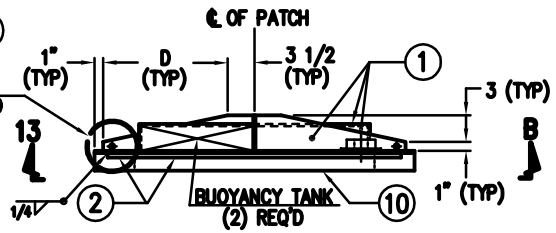
PLAN 15-E
PATCH, TYPE I
SCALE : 1 1/2" = 1'-0"



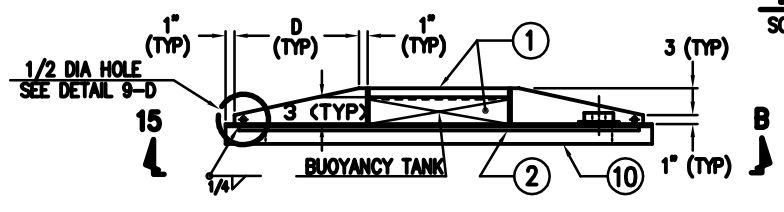
PLAN 13-E
PATCH, TYPE II
SCALE : 1 1/2" = 1'-0"



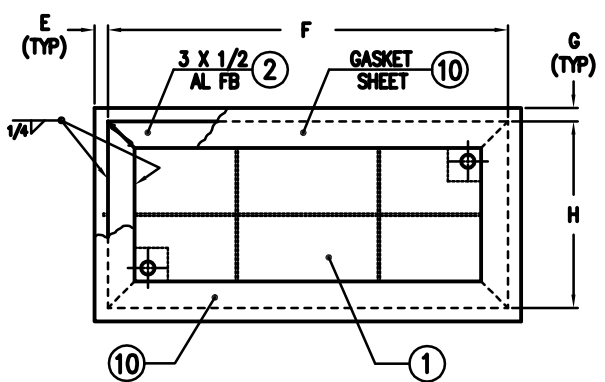
ELEVATION 14-D
SCALE : 1 1/2" = 1'-0"



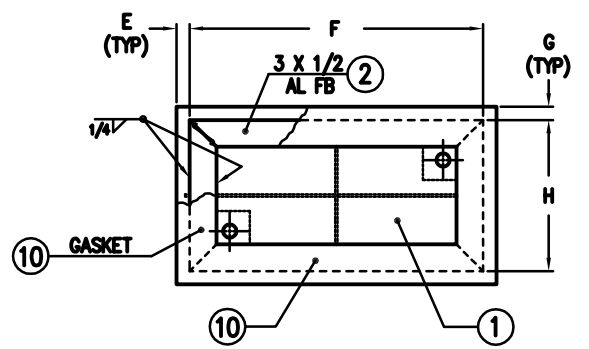
ELEVATION 13-D
SCALE : 1 1/2" = 1'-0"



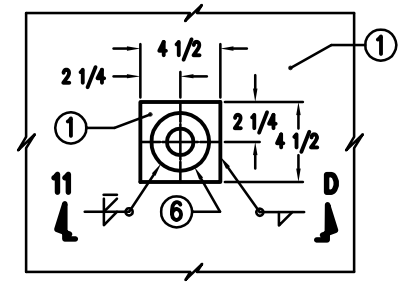
ELEVATION 15-D
SCALE : 1 1/2" = 1'-0"



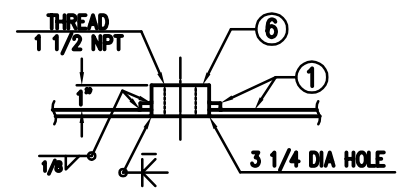
PLAN 15-B
SCALE : 1 1/2" = 1'-0"



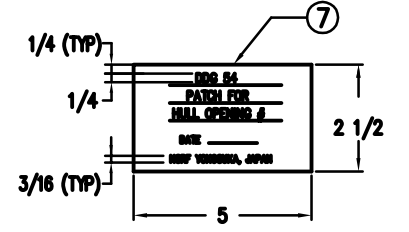
PLAN 13-B
SCALE : 1 1/2" = 1'-0"



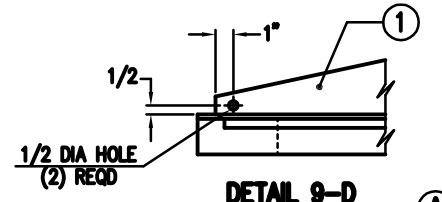
DETAIL 11-E
EDUCTOR PLUG
SCALE : 3" = 1'-0"



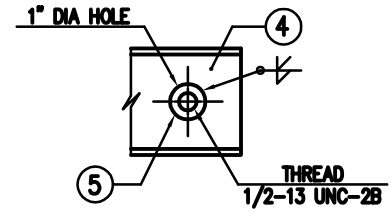
DETAIL 11-D
SCALE : 3" = 1'-0"



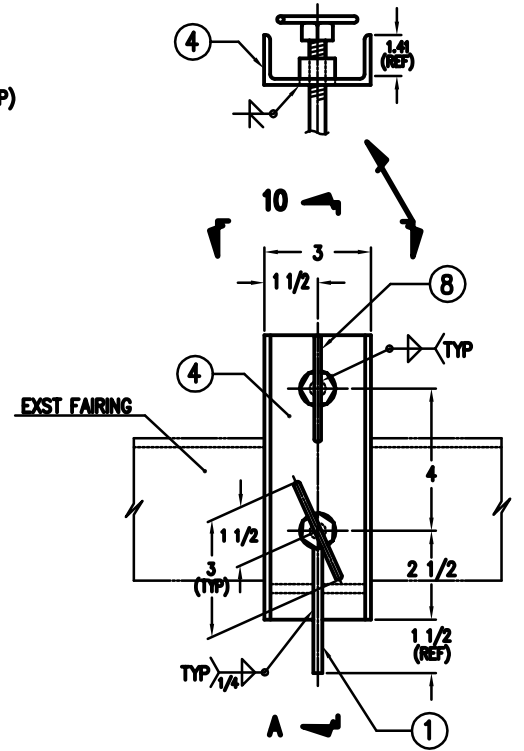
DETAIL 10-E
LABEL PLATE (10) REQ'D
SCALE : 6" = 1'-0"



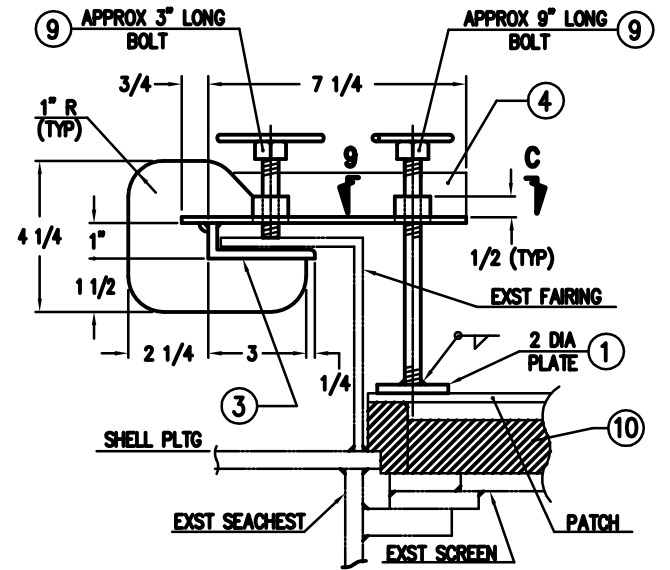
DETAIL 9-D
THE OTHER SIDE TO BE SM.
(TYP). SCALE : 3" = 1'-0"



DETAIL 9-C
TYPICAL
SCALE : 6" = 1'-0"



DETAIL 11-A
SECURING DEVICE, (30) REQ'D
SCALE : 6" = 1'-0"



DETAIL 10-A
SCALE : 6" = 1'-0"

LI NO.	TYPE	OPENING SIZE (L x W)	DIMENSIONS										REMARKS	
			A	B	C	D	E	F	G	H	J	K		
2	II	34 3/4 x 22	41 1/2	28 1/2	20 3/4	17	1/4	41	1/4	28	10	15 3/4		USE J-BOLT FOR INSTL
5	I	46 1/2 x 25 1/2	52	26 1/2	17	16	3	46	3/4	25	10 3/4	18		
8	II	34 1/2 x 25 1/2	40	26 1/4	20	16 1/2	3	34	5/8	25	10	14 7/8		
9	II	21 1/4 x 21 1/4	27	22	13 1/2	10	3	21	3/4	20 1/2	8	10 1/2		
12	I	46 1/2 x 25 1/2	52	26 1/2	17	15	3	46	3/4	25	10 3/4	18		
15	I	46 1/2 x 25 1/2	52	26 1/2	17	15	3	46	3/4	25	10 3/4	18		
18	II	22 1/2 x 25 1/2	28	27 1/4	14	10 1/2	3	22	1 1/8	25	10 1/2	11		
19	I	46 1/2 x 25 1/2	52	26 1/4	17	15	3	46	1 5/8	26	10 1/2	18		USE J-BOLT FOR INSTL
21	II	34 1/2 x 25 1/2	40	29 1/4	20	16 1/2	3	34	2	25 1/4	9 1/4	17		
24	I	46 x 12 1/2	53	19	17	15	1/4	52 1/2	1/4	18 1/2	7	19		USE J-BOLT FOR INSTL

TABLE 14-A
DIMENSION IN INCH (A) (B)