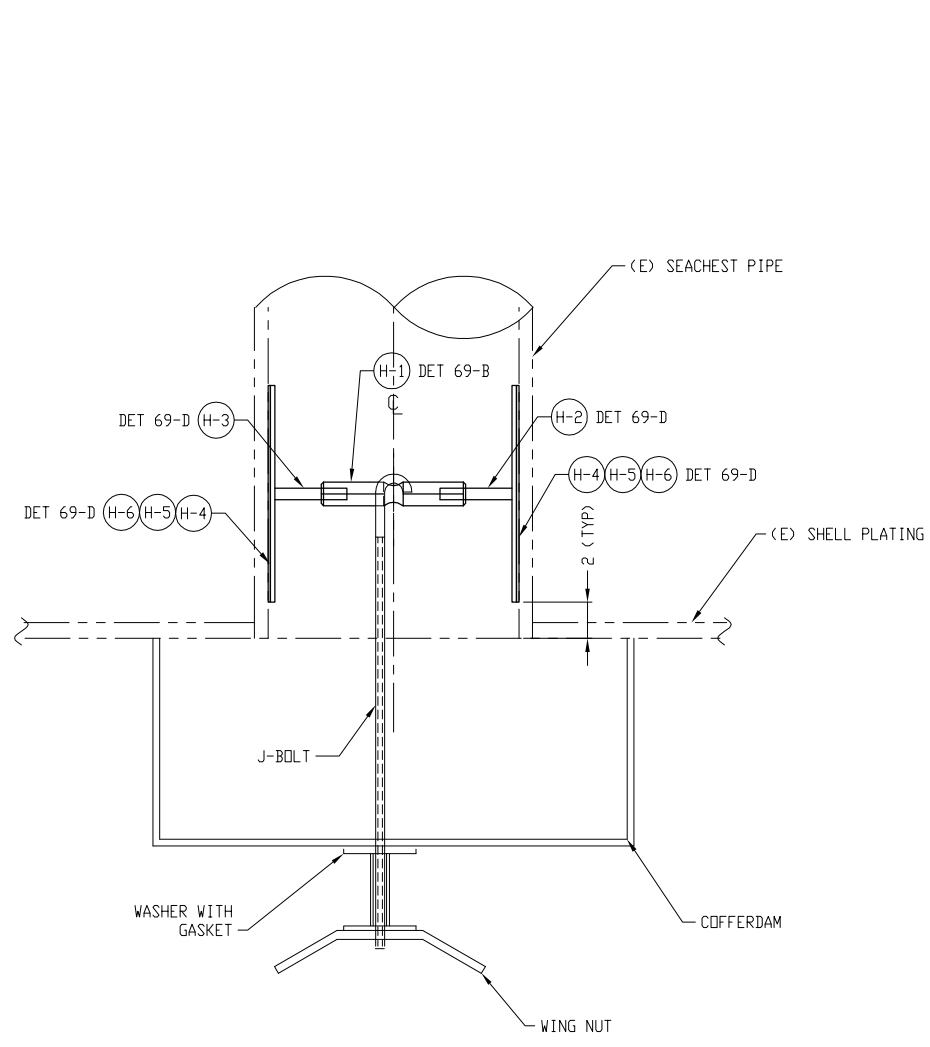
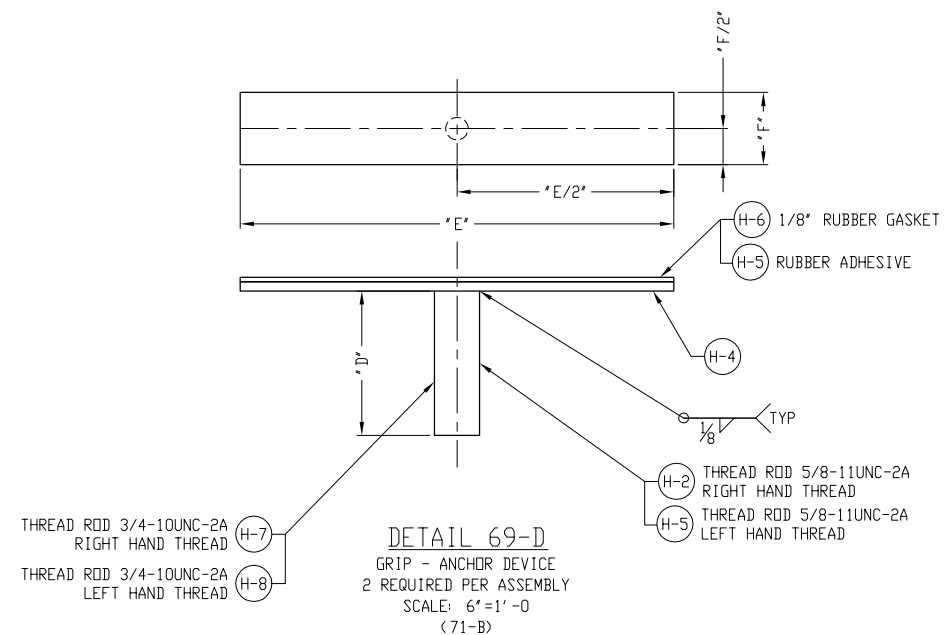


LIST OF ASSEMBLIES										LIST OF MATERIAL (QUANTITY FOR ONE COFFERDAM)									
ITEM NO.	QTY	DESCRIPTION	LAST NO. USED	TOTAL NO. REQD.	MATL SPEC	MATL ROD	NSN OR MFGR PART NO.	SCE	APL NO.	UNIT WT	REMARKS								
H-1	1	BAR, HEX, 1-1/2" NDM	-	-	00-S-763	CRES	92-9510-00-189-0567	1AF	-	6.62	CL 304								
H-2	1	ROD, 5/8" DIA	-	-	00-S-763	CRES	92-9510-00-189-0581	1AF	-	1.04	CL 304								
H-3	1	ROD, 5/8" DIA	-	-	00-S-763	CRES	92-9510-00-189-0581	1AF	-	1.04	CL 304								
H-4	2	PLATE METAL, 0.125" THICK	-	-	00-S-763	CRES	92-9515-01-116-6776	1AF	-	5.0	CL 304								
H-5	2	GASKET, RUBBER, 1/8" THICK	-	-	MIL-R-900	RBBR	90-8040-00-754-2685	1AF	-	-	-								
H-6	1	ADHESIVE, RUBBER	-	-	MM-A-130B	RBBR	90-8010-01-355-5841	1AF	-	-	-								
H-7	1	ROD, 3/4" DIA	-	-	00-S-763	CRES	92-9510-01-114-8008	1AF	-	1.50	CL 304								
H-8	1	ROD, 3/4" DIA	-	-	00-S-763	CRES	92-9510-01-114-8008	1AF	-	1.50	CL 304								

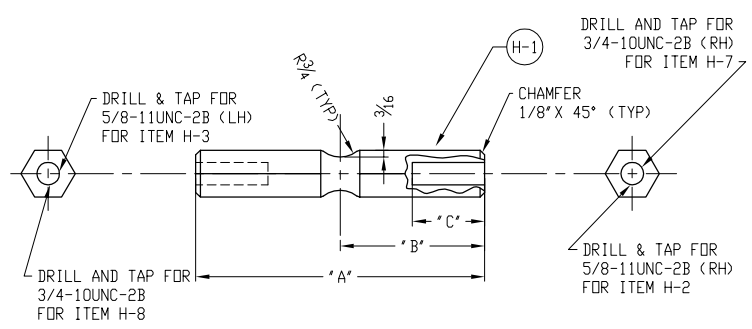
REVISIONS					
REV	ZONE	DESCRIPTION	BY	DATE	APPROVED
E	SH 9	SHEETS REVISED TO SUIT NAVSEA OOC5 COMMENTS.	JUR JR	6/24/06	JUR JR



ELEVATION 71-B
TYPICAL ANCHOR DEVICE INSTALLATION
SCALE: 3"=1'-0"



DETAIL 69-D
GRIP - ANCHOR DEVICE
2 REQUIRED PER ASSEMBLY
SCALE: 6"=1'-0"
(71-B)



DETAIL 68-B
TURNBUCKLE, ANCHOR DEVICE
ONE REQUIRED PER ASSEMBLY
SCALE: 6"=1'-0"
(71-B)

GENERAL NOTES

- (C) 1.0 ALL FABRICATION, WELDING AND INSPECTION SHALL BE IN ACCORDANCE WITH MIL-STD 1689 (SH). TOLERANCES SHALL BE AS SPECIFIED IN THE DIMENSIONAL TOLERANCE BLOCK ON SHEET 1 OF THIS DRAWING.
1.1 ALL WELDS SHALL BE VISUALLY INSPECTED IN ACCORDANCE WITH MIL-STD-1689 (SH).
- 2.0 GRIND A 1/8" RADIUS ON ALL EDGES OF THE COFFERDAM ANCHOR DEVICE TO PREVENT DAMAGE TO PERSONNEL AND OR EQUIPMENT.
- 3.0 ITEMS H-5 AND H-6 SHALL BE INSTALLED BY DIVERS PRIOR TO COFFERDAM INSTALLATION ON BOARD SHIP.
- 4.0 THE CALCULATED AIR WEIGHT FOR THE ANCHOR DEVICE IS LISTED IN TABLE 70-A. THE ACTUAL WEIGHT OF EACH ANCHOR DEVICE SHALL BE DETERMINED AFTER FABRICATION AND SHALL BE STAMPED ON THE TURNBUCKLE.
- 5.0 COFFERDAM ANCHOR DEVICE IS DESIGNED FOR A MAXIMUM SAFE WORKING LOAD AS NOTED IN TABLE 70-A. THIS IS BASED UPON THE AIR WEIGHT OF THE COFFERDAM.
- (E) 6.0 UPON COMPLETION OF ANCHOR DEVICE AND AFTER DELIVERY, DIVERS SHALL INSTALL A LABEL PLATE TO IDENTIFY THE ANCHOR DEVICE WITH THE FOLLOWING INFORMATION:
NAVSEA DRAWING NUMBER 53711-805-7370421
DATE MANUFACTURED
MODEL NUMBER - SERIAL NUMBER
- 7.0 TEMPORARY ANCHORING DEVICES FABRICATED IN ACCORDANCE WITH THIS DESIGN AND LIMITED TO THE SPECIFIC DIMENSION AND HULL OPENING SIZE RANGES SPECIFIED IN TABLE 70-A ARE NAVSEA APPROVED FOR POSITIVELY SECURING THE COFFERDAM PATCHES WITHOUT ADDITIONAL HOGGING LINES.

MODEL NUMBER	HOLE SIZE	CALC WEIGHT	SAFE WORKING LOAD	'A' DIMENSION	'B' DIMENSION	'C' DIMENSION	'D' DIMENSION	'E' DIMENSION	'F' DIMENSION
AD-08	34" - 40" DIA	21 LB	215 LB	32"	16"	8-1/2"	8"	7-1/2"	7-1/2"
AD-07	28" - 34" DIA	17-1/2 LB	215 LB	26"	13"	7-1/2"	7"	7-1/2"	7-1/2"
AD-06	22" - 28" DIA	13-1/2 LB	140 LB	20"	10"	6-1/2"	6"	6"	6"
AD-05	16" - 22" DIA	9-3/4 LB	115 LB	14"	7"	5-1/2"	5"	5-1/2"	5-1/2"
AD-04	12" - 16" DIA	6-3/4 LB	75 LB	10"	5"	4-1/2"	4"	4"	4"
AD-03	10" - 12" DIA	5-1/2 LB	75 LB	8"	4"	3-1/2"	3"	4"	4"
AD-02	8" - 10" DIA	4-1/2 LB	75 LB	6"	3"	2-1/2"	2-1/2"	4"	4"
AD-01	6" - 8" DIA	3 LB	50 LB	4"	2"	1-7/8"	2-1/2"	3-1/2"	3-1/2"

TABLE 70-A									
TITLE	NO.	HULL	TITLE	IDENT					
ANCHOR DEVICE	3	STD	SURFACE SHIP - TIGHTNESS REQUIREMENTS	53711-192-7239932					
	2	STD	ENGINEERING CALCULATIONS	53711-803-7370422					
	1	STD	UNDERWATER SHIP HUSBANDRY	S0600-A0PRO-160/CH-16					

REFERENCES					
ITEM	SIZE	FSCM NO.	WT GRP	NAVSEA DRAWING NO.	REV
H	F	53711	805	7370421	E